

HELLINGS BUILDERS

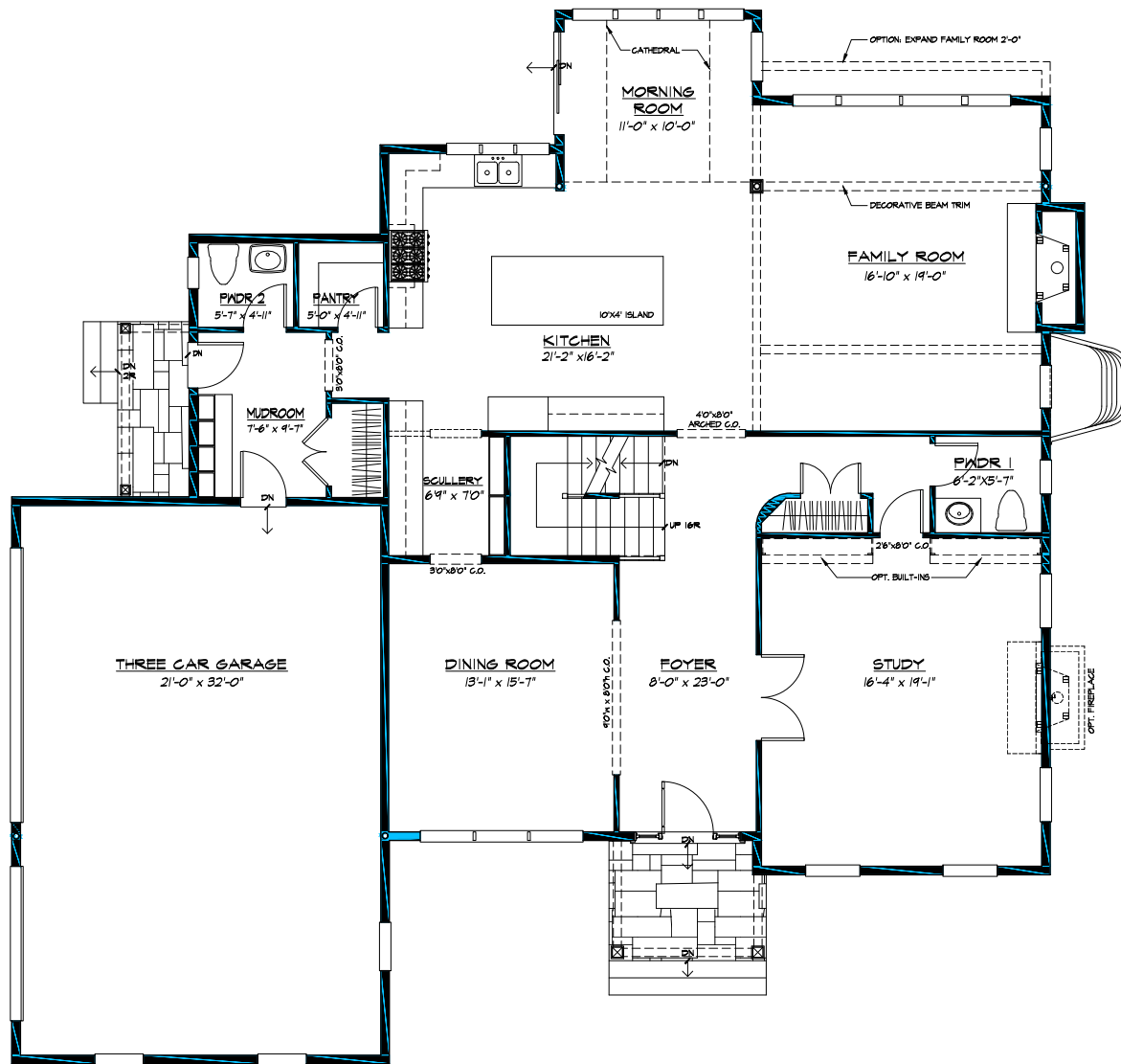


FARMHOUSE

• Bradford III •

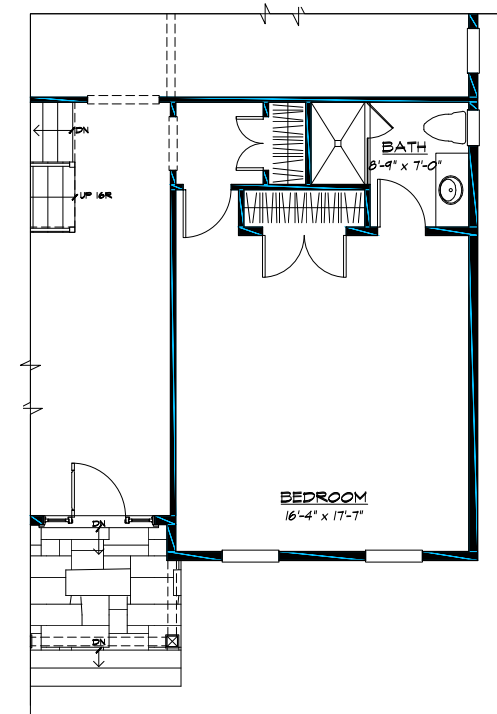
Artist's Conceptual Drawing

Please note: All illustrations and floor plans are artist's conceptual renderings. Details and dimensions are subject to change and field variation.



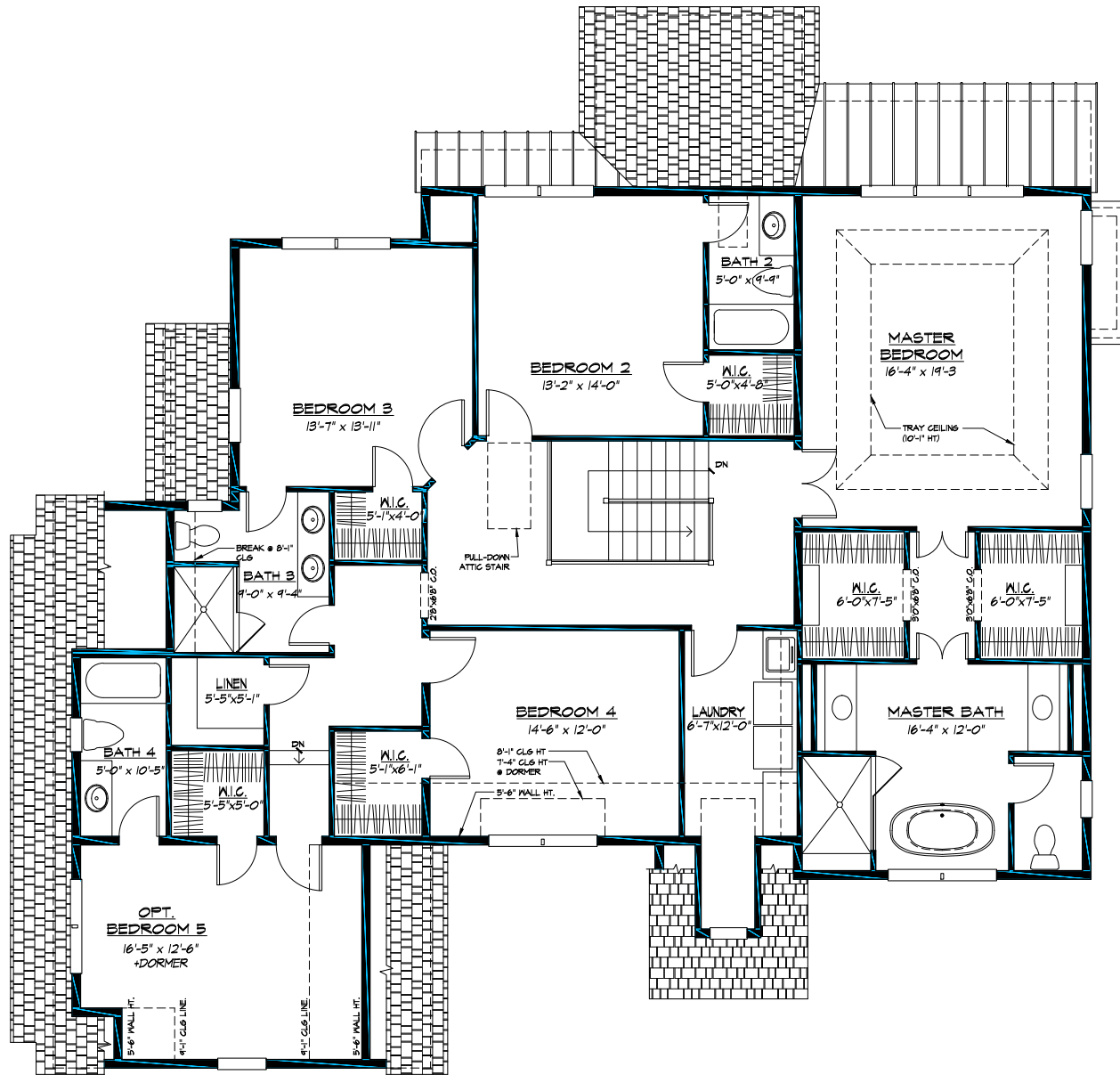
FIRST FLOOR PLAN

SCALE: 1/4" = 1'-0"



1ST FLR BEDROOM OPT. "A"

SCALE: 1/4" = 1'-0"



BRADFORD 3 FOOTAGE:	
FIRST FLOOR:	1,992 S.F.
SECOND FLOOR:	1,917 S.F.
TOTAL:	3,909 S.F.
OPT. 5TH BEDROOM:	314 S.F.
(INCLUDES BATH #3 & W.C.)	

SECOND FLOOR PLAN

SCALE: 1/4" = 1'-0"

ALTERNATE ELEVATIONS



FRENCH



MODERN